

**Anti-CLEC7A Reference Antibody (Baylor patent anti-Dectin-1)  
Recombinant Antibody  
Catalog # APR10838****Specification****Anti-CLEC7A Reference Antibody (Baylor patent anti-Dectin-1) - Product Information**

Application	FC, Kinetics, Animal Model
Primary Accession	<a href="#">Q9BXN2</a>
Reactivity	Human
Clonality	Monoclonal
Isotype	IgG4
Calculated MW	150 KDa

**Anti-CLEC7A Reference Antibody (Baylor patent anti-Dectin-1) - Additional Information****Target/Specificity**  
CLEC7A**Endotoxin**  
< 0.001EU/ µg,determined by LAL method.**Conjugation**  
Unconjugated**Expression system**  
CHO Cell**Format**  
Purified monoclonal antibody supplied in PBS, pH6.0, without preservative.This antibody is purified through a protein A column.**Anti-CLEC7A Reference Antibody (Baylor patent anti-Dectin-1) - Protein Information****Name** CLEC7A ([HGNC:14558](#))**Function**  
Lectin that functions as a pattern recognizing receptor (PRR) specific for beta-1,3-linked and beta-1,6-linked glucans, which constitute cell wall constituents from pathogenic bacteria and fungi (PubMed:<a href="http://www.uniprot.org/citations/11567029" target="\_blank">11567029</a>, PubMed:<a href="http://www.uniprot.org/citations/12423684" target="\_blank">12423684</a>). Necessary for the TLR2-mediated inflammatory response and activation of NF-kappa-B: upon beta-glucan binding, recruits SYK via its ITAM motif and promotes a signaling cascade that activates some CARD domain-BCL10-MALT1 (CBM) signalosomes, leading to the activation of NF-kappa-B and MAP kinase p38 (MAPK11, MAPK12, MAPK13 and/or MAPK14) pathways which stimulate expression of genes encoding pro-inflammatory cytokines and chemokines (By similarity). Enhances cytokine production in macrophages and dendritic cells (By similarity). Mediates production of reactive oxygen species in the cell (By similarity). Mediates phagocytosis of C.albicans conidia (PubMed:<a href="http://www.uniprot.org/citations/17230442" target="\_blank">17230442</a>)

target="\_blank">17230442</a>). Binds T-cells in a way that does not involve their surface glycans and plays a role in T-cell activation. Stimulates T-cell proliferation. Induces phosphorylation of SCIMP after binding beta-glucans (By similarity).

#### Cellular Location

Cell membrane; Single-pass type II membrane protein [Isoform 6]: Cytoplasm.

#### Tissue Location

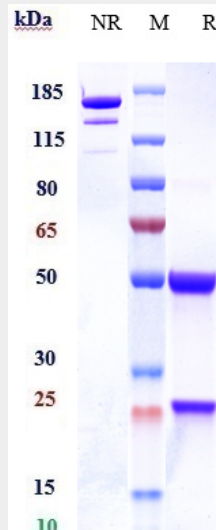
Highly expressed in peripheral blood leukocytes and dendritic cells. Detected in spleen, bone marrow, lung, muscle, stomach and placenta.

### Anti-CLEC7A Reference Antibody (Baylor patent anti-Dectin-1) - Protocols

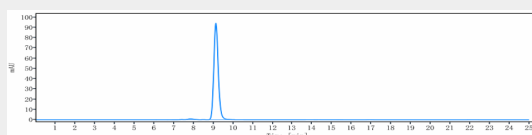
Provided below are standard protocols that you may find useful for product applications.

- [Western Blot](#)
- [Blocking Peptides](#)
- [Dot Blot](#)
- [Immunohistochemistry](#)
- [Immunofluorescence](#)
- [Immunoprecipitation](#)
- [Flow Cytometry](#)
- [Cell Culture](#)

### Anti-CLEC7A Reference Antibody (Baylor patent anti-Dectin-1) - Images



Anti-CLEC7A Reference Antibody (Baylor patent anti-Dectin-1) on SDS-PAGE under reducing (R) condition. The gel was stained with Coomassie Blue. The purity of the protein is greater than 90%



The purity of Anti-CLEC7A Reference Antibody (Baylor patent anti-Dectin-1) is more than 95%, determined by SEC-HPLC.